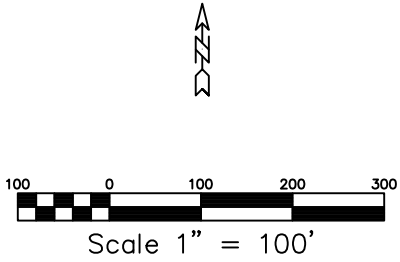


SEE SHEET 1



LEGEND

- = CONCRETE MONUMENT SET
- = CONCRETE MONUMENT FOUND
- = MONUMENT LINE
- = 2466 CONTOUR LINE
- = 2462 CONTOUR LINE
- = 25 FT. SAFETY LINE
- = BUYDOWN AREAS
- LR = LAKE RESIDENTIAL
- TC = TOWN CENTER
- TR = TOWN RESIDENTIAL
- ◆ = MONUMENT TO BE SET
- ◆ = CALCULATED MONUMENT LOCATIONS THAT CANNOT BE SET
- = 1" REBAR WITH ALUMINUM CAP SET
- = 2" BRASS DISC SET

CONTOURS ARE AT 2 FT. INTERVALS REFERENCED TO THE STAFF GAUGE AT THE PENSTOCK.

DEEP CREEK LAKE SURVEY DATA

1. HORIZONTAL DATUM

HORIZONTAL DATUM = LAMBERT NAD 83 DATUM
 NAD 83 DATUM = FIELD OBSERVATION X COMBINED SCALE FACTOR
 COMBINED SCALE FACTOR = GRID SCALE FACTOR X ELEVATION SCALE FACTOR
 APPROXIMATE COMBINED SCALE FACTOR = 0.99989

2. VERTICAL DATUM

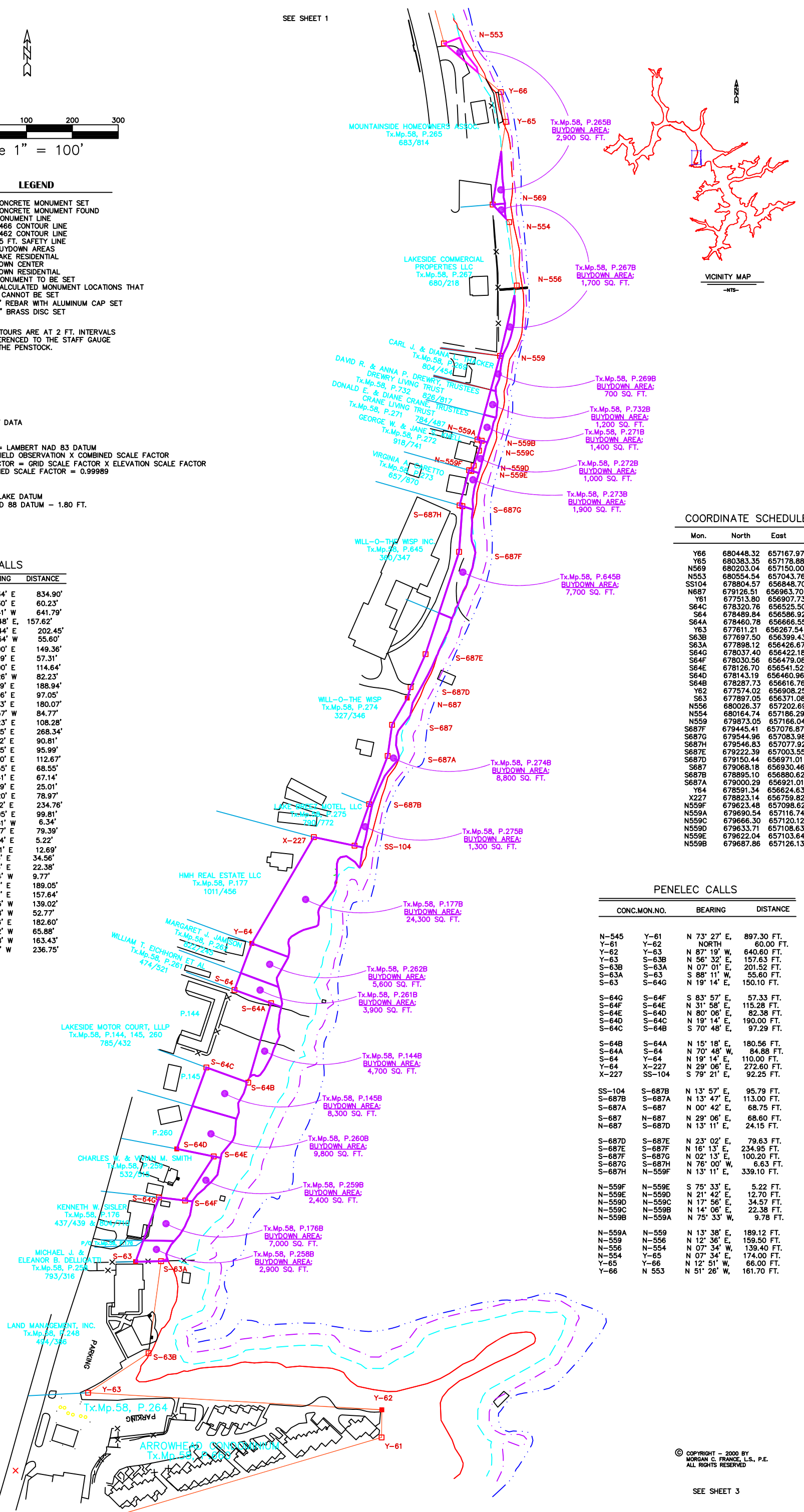
VERTICAL DATUM = LAKE DATUM
 LAKE DATUM = NAVD 88 DATUM - 1.80 FT.

SURVEY CALLS

CONC.MON.	BEARING	DISTANCE
N545 WIT.#1-Y61	N 73°34' E	834.90'
Y61-Y62	N 00°30' E	60.23'
Y62-Y63	N 86°41' W	641.79'
Y63-S63B	N 56°48' E	157.62'
S63B-S63A	N 07°44' E	202.45'
S63A-S63	S 88°54' W	55.60'
S63-S64G	N 20°00' E	149.36'
S64G-S64F	S 83°09' E	57.31'
S64F-S64E	N 33°00' E	114.64'
S64E-S64D	N 78°26' W	82.23'
S64D-S64C	N 19°59' E	188.94'
S64C-S64B	S 70°06' E	97.05'
S64B-S64A	N 16°03' E	180.07'
S64A-S64	N 69°57' W	84.77'
S64-Y64	N 20°23' E	108.28'
Y64-X227	N 30°15' E	268.34'
X227-SS104	S 78°12' E	90.81'
SS104-S687B	N 19°25' E	95.99'
S687B-S687A	N 21°00' E	112.67'
S687A-S687	N 07°55' E	68.55'
S687-S687D	N 29°41' E	67.14'
S687D-S687E	N 16°59' E	25.01'
S687E-S687F	N 24°20' E	78.97'
S687F-S687G	N 18°12' E	234.76'
S687G-S687H	N 04°05' E	99.81'
S687H-S687H	N 72°51' W	6.34'
S687H-N559F	N 15°07' E	79.39'
N559F-N559E	S 74°04' E	5.22'
N559E-N559D	N 23°11' E	12.69'
N559D-N559C	N 19°25' E	34.56'
N559C-N559B	N 15°35' E	22.38'
N559B-N559A	N 74°04' W	9.77'
N559A-N559	N 15°07' E	189.05'
N559-N558	N 13°27' E	157.64'
N558-N554	N 06°45' W	139.02'
N554-N569	N 43°28' W	52.77'
N569-N565	N 09°06' E	182.60'
Y65-Y66	N 09°32' W	65.88'
Y66-N553	N 49°28' W	163.43'
N553-S67	N 15°14' W	236.75'

TC

WITHIN SANITATION DISTRICT



COORDINATE SCHEDULE

Mon.	North	East
Y66	680448.32	657167.97
Y65	680383.35	657178.88
N569	680203.04	657150.00
N553	680554.54	657043.76
SS104	678804.57	656848.70
N687	679126.51	656963.70
Y61	677513.80	656907.73
S64C	678320.76	656525.50
S64	678489.84	656586.92
S64A	678460.78	656666.55
Y63	677611.21	656267.54
S63B	677697.50	656399.43
S63A	677898.12	656426.67
S64G	678037.40	656422.18
S64F	678030.56	656479.08
S64E	678126.70	656541.52
S64D	678143.19	656460.96
S64B	678287.73	656616.76
Y62	677574.02	656908.25
S63	677897.05	656371.08
N556	680026.37	657202.69
N554	680164.74	657186.29
N559	679873.05	657166.04
S687F	679445.41	657076.87
S687G	679544.96	657083.98
S687H	679546.83	657077.92
S687E	679222.39	657003.55
S687D	679150.44	656971.01
S687	679068.18	656930.46
S687B	678895.10	656880.62
S687A	679000.29	656921.01
Y64	678591.34	656624.63
X227	678823.14	656759.82
N559F	679623.48	657098.62
N559A	679690.54	657116.74
N559C	679666.30	657120.12
N559D	679653.71	657108.63
N559E	679622.04	657103.64
N559B	679687.86	657126.13

PENELEC CALLS

CONC.MON.NO.	BEARING	DISTANCE
N-545	Y-61	N 73° 27' E, 897.30 FT.
Y-61	Y-62	NORTH, 60.00 FT.
Y-62	Y-63	N 87° 19' W, 640.60 FT.
Y-63	S-63B	N 56° 32' E, 157.63 FT.
S-63B	S-63A	N 07° 01' E, 201.52 FT.
S-63A	S-63	S 88° 11' W, 55.60 FT.
S-63	S-64G	N 19° 14' E, 150.10 FT.
S-64G	S-64F	S 83° 57' E, 57.33 FT.
S-64F	S-64E	N 31° 58' E, 115.28 FT.
S-64E	S-64D	N 80° 06' E, 82.38 FT.
S-64D	S-64C	N 19° 14' E, 190.00 FT.
S-64C	S-64B	S 70° 48' E, 97.29 FT.
S-64B	S-64A	N 15° 18' E, 180.56 FT.
S-64A	S-64	N 70° 48' W, 84.88 FT.
S-64	Y-64	N 19° 14' E, 110.00 FT.
Y-64	X-227	N 29° 06' E, 272.60 FT.
X-227	SS-104	S 79° 21' E, 92.25 FT.
SS-104	S-687B	N 13° 57' E, 95.79 FT.
S-687B	S-687A	N 13° 47' E, 113.00 FT.
S-687A	S-687	N 00° 42' E, 68.75 FT.
S-687	N-687	N 29° 06' E, 68.60 FT.
N-687	S-687D	N 13° 11' E, 24.15 FT.
S-687D	S-687E	N 23° 02' E, 79.63 FT.
S-687E	S-687F	N 18° 13' E, 234.95 FT.
S-687F	S-687G	N 02° 13' E, 100.20 FT.
S-687G	S-687H	N 76° 00' W, 6.63 FT.
S-687H	N-559F	N 13° 11' E, 339.10 FT.
N-559F	N-559E	S 75° 33' E, 5.22 FT.
N-559E	N-559D	N 21° 42' E, 12.70 FT.
N-559D	N-559C	N 17° 56' E, 34.57 FT.
N-559C	N-559B	N 14° 06' E, 22.38 FT.
N-559B	N-559A	N 75° 33' W, 9.78 FT.
N-559A	N-559	N 13° 38' E, 189.12 FT.
N-559	N-556	N 12° 36' E, 159.50 FT.
N-556	N-554	N 07° 34' W, 139.40 FT.
N-554	Y-65	N 07° 34' E, 174.00 FT.
Y-65	Y-66	N 12° 51' W, 66.00 FT.
Y-66	N 553	N 51° 26' W, 161.70 FT.

© COPYRIGHT - 2000 BY MORGAN C. FRANCE, L.S., P.E. ALL RIGHTS RESERVED

SEE SHEET 3

SHT. NO. 2

DRAWING 2, ARROWHEAD COVE

DEEP CREEK PROJECT
BUY DOWN SURVEY

PREPARED BY: MORGAN C. FRANCE, L.S., P.E.
10 North Third Street
Oakland, Maryland 21550
(301) 334-2305

REVISIONS
1/02/03

DRAWN BY: SUSAN N. EVANS PERANOD
and MARGARET A. JORDAN
dwc: ARWHD4
123\C\DATA\EP\PROJECTS\02L\2000\ARWHD4

APPROVED BY: MORGAN C. FRANCE
PROJ. NO.
Plot date: 7/10/00 at 9:45